

**Notice before using:**

Easy damaged controller caution

<http://www.mqcontroller.com/show/?id=108>

Controller Hall Angle test

<http://www.mqcontroller.com/show/?id=118>

Controller Manuals & software

<http://www.mqcontroller.com/list/?classid=4>

Display manual

<http://www.mqcontroller.com/upfile/202108/2021083151549269.pdf>

**1. SVMC-M Controller Functions:**

Hall(with temp sensor KTY83-122), throttle, low brake, display, reverse, speed limit, PAS, alarm, USB.

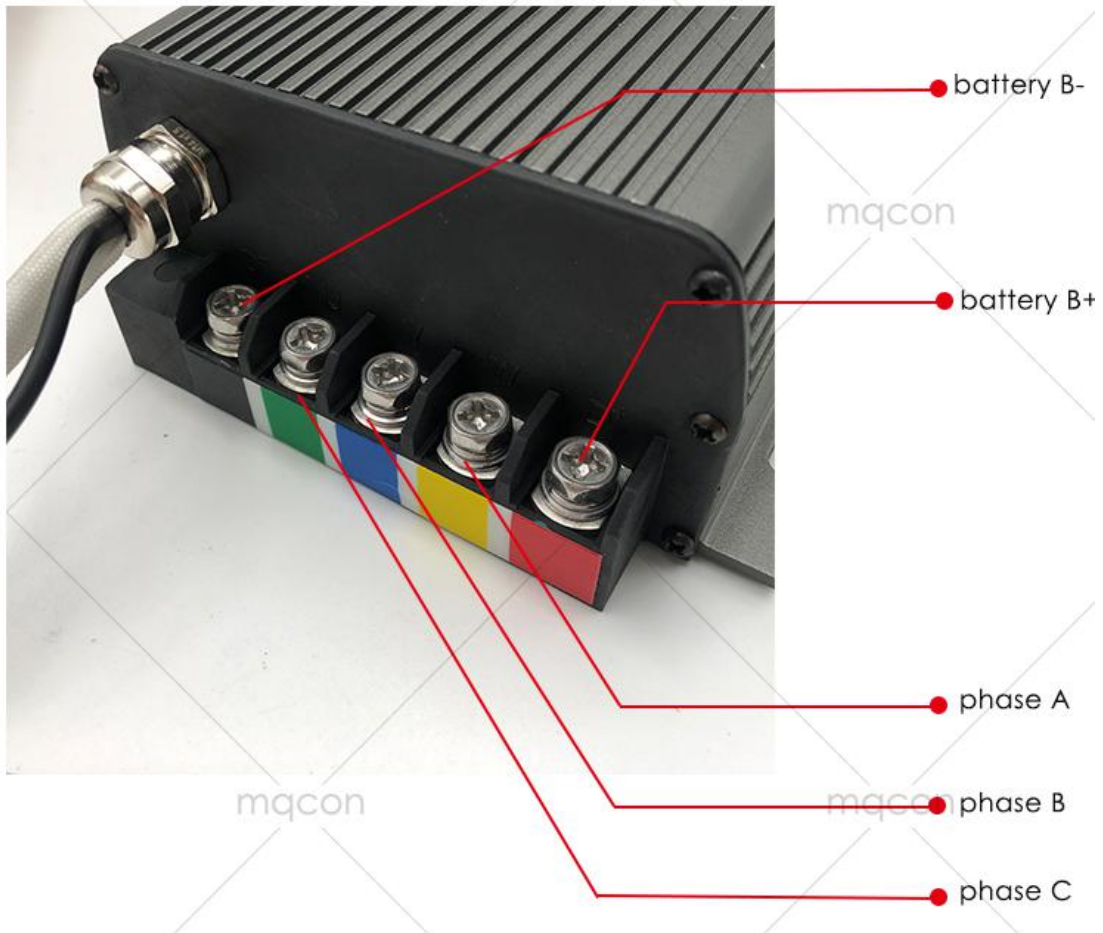
**2. Functions connections:**

1) Phase wire & battery wire:

<http://www.mqcontroller.com/show/?id=107>

When connect with QS Motor, it's color to color connect for phase wires.

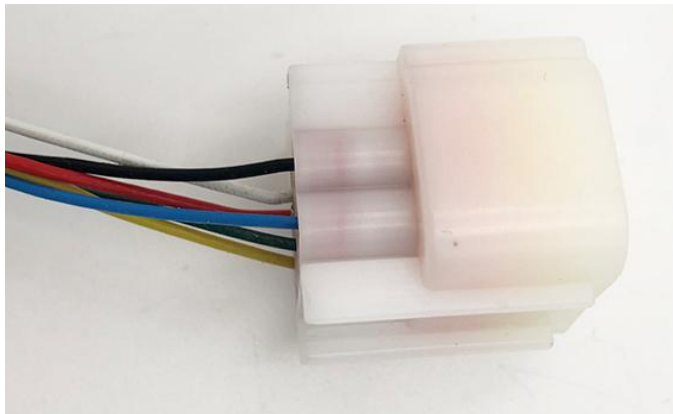
### phase & power terminal of big power controller



### 2) Hall Plug:

<http://www.mqcontroller.com/show/?id=106>

When connect with QS Motor, it's plug to plug.



3) Throttle:

<http://www.mqcontroller.com/show/?id=113>

When connect with throttle ZX01, it's plug to plug.



4) Low Brake:

<http://www.mqcontroller.com/show/?id=122>

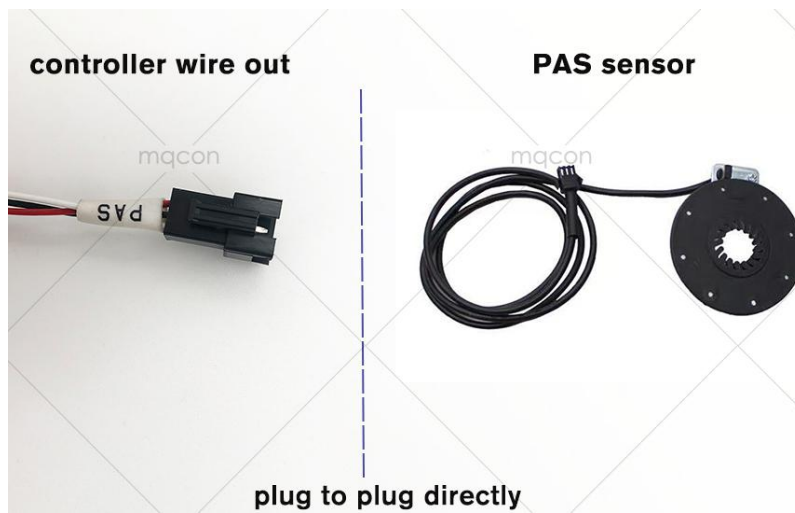
Plug to plug for SM-2P plugs.





5) PAS:

<http://www.mqcontroller.com/show/?id=119>



6) Display:

<http://www.mqcontroller.com/show/?id=117>

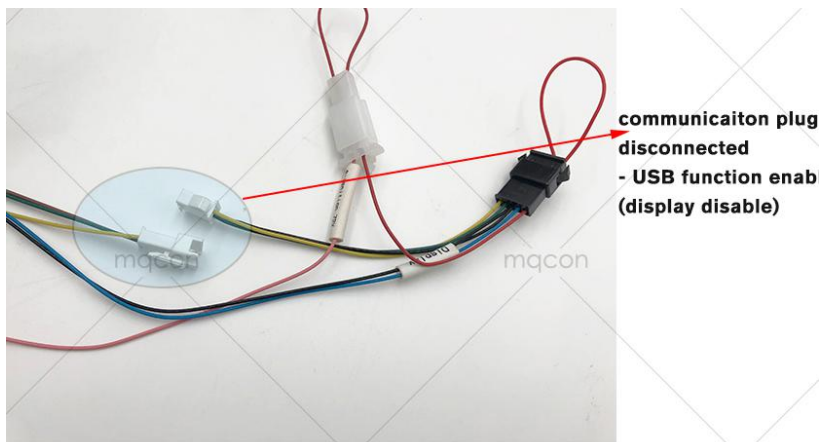
**3) SVMC-M models (with TFT display function)**

**3.1) display function enable**



**7) USB:**

<http://www.mqcontroller.com/show/?id=117>



**connect with bluetooth(phone app)**



**connect with USB cable (computer)**

**8) Alarm:**

<http://www.mqcontroller.com/show/?id=116>

### controller alarm wires out



orange wire - ignition working volt  
blue wire - anti-theft signal  
brown wire - motor signal  
red wire - battery B+  
black wire - battery B-

### alarm device



If the alarm color not keep same with controller, you can connect it in same definition with controller.

### 9) Reverse:

Connect your reverse switch directly.



### 10) Speed Limit:

Connect your speed limit switch directly.

